



**TINES**  
DIRECT

tinesdirect.com

## PRODUCT GUIDE 2025

Quality replacement  
tines, blades and brushes  
all with free delivery\*

For more information and advice  
visit [www.tinesdirect.com](http://www.tinesdirect.com)  
freephone +44 (0)800 083 0216  
or email [sales@tinesdirect.com](mailto:sales@tinesdirect.com)

# Introduction

**Welcome to Tines Direct** - a world of quality replacement tines, blades, brushes and accessories that you can rely on.

Designed by turf care experts for turf care experts our complete range of professional replacement parts will keep your turf care machinery running at peak performance all year round.

The vast stock and fast, efficient ordering system, guarantees delivery of the parts you require when you need them. And with free delivery for all orders over £120 (+vat).



**Free delivery** on online orders over £120 (+vat)

visit [www.tinesdirect.com](http://www.tinesdirect.com)

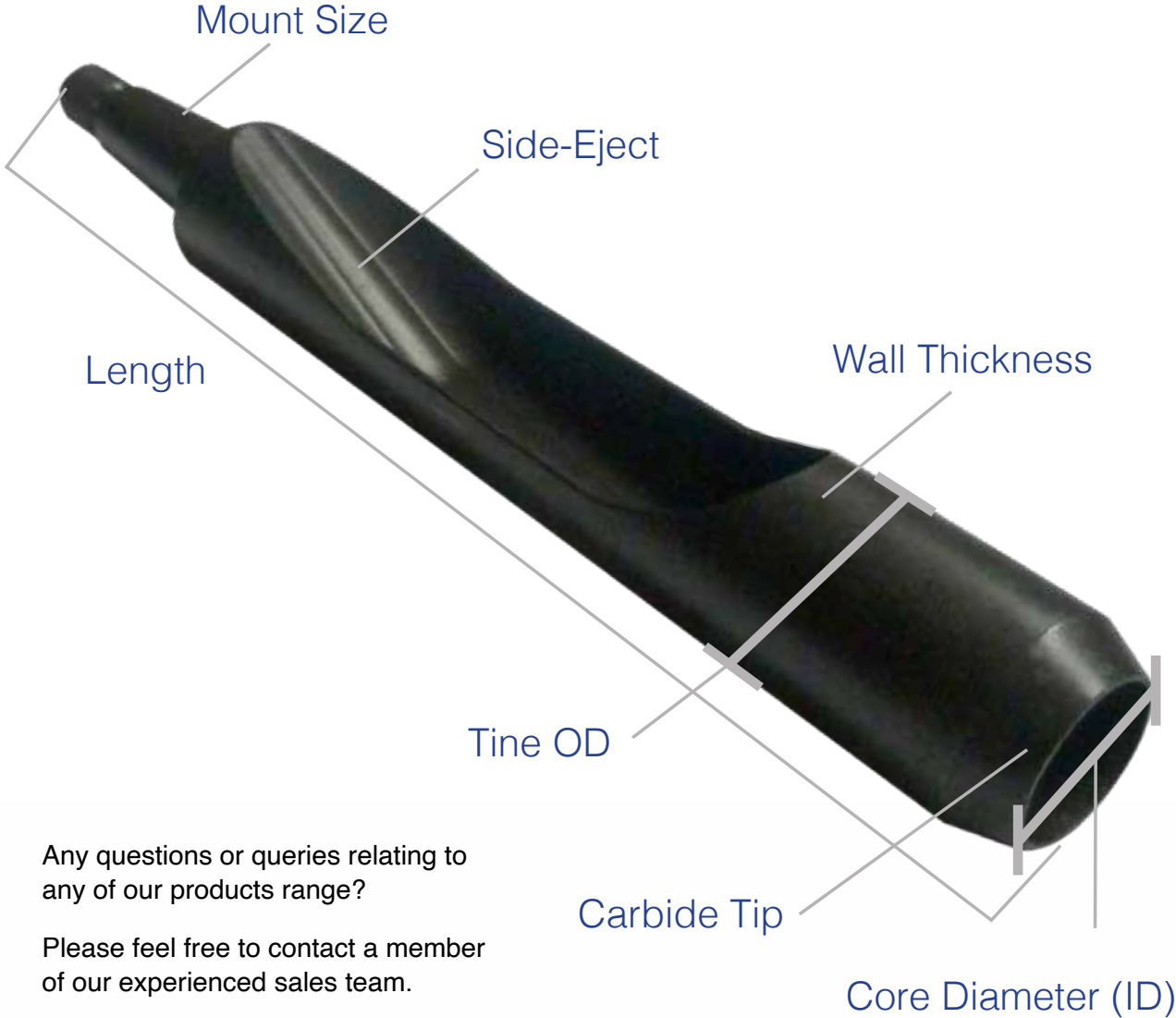
freephone +44 (0)800 083 0216 or email [sales@tinesdirect.com](mailto:sales@tinesdirect.com)

## General Conditions

The length measurements refer to the total length of the tools. All prices exclude VAT and are quoted in GBP £ Sterling. Free shipping on online orders only. All goods sold are subject to the company's terms & conditions. Copies are available on request. All prices and machinery specifications are subject to change and without notice.



# Tine Terminology Explained



Any questions or queries relating to any of our products range?

Please feel free to contact a member of our experienced sales team.



## **TECHNICAL DATA**

Tine Terminology Explained

Page 2 - 3

## **VERTICUT / SCARIFYING / SLITTING BLADES**

Amazone/Graden/Jacobsen

Page 6

John Deere/Ryan/Mataway/Sisis

Page 7

Huxley/Long Equip/Trilo/Toro/Wiedenmann

Page 8

## **TINE ADAPTERS**

Various adapters - Selvatici/Soil Reliever/Vertidrain compatible/Toro/

John Deere/Ransomes/Ryan/Multicore/Groundsman/Wiedenmann

Page 9

## **TINY TINE®**

tiny tine® hollow tines

Page 10

## **BLEC GROUNDBREAKER / SANDMASTER BLADES**

Blec GroundBreaker

Page 10

## **AERA-VATOR TINES**

Aera-Vator 3 inch Spike Tine

Page 11

## **VERTI-CORE (plus Rapidcore 1.2m & 1.6m)**

Hollow Tine hardened / carbide tipped

Page 12

Cross Tine hardened / carbide tipped/solid tine

Page 13

## **VERTIDRAIN (compatible with)**

Hollow Tine hardened

Page 14

Hollow Tine carbide tipped

Page 15

Cross Tine hardened

Page 16

Solid Tine hardened

Page 17

Solid Tine hardened continued flat chisel hardened

Page 18

## **JOHN DEERE / MULTICORE**

Hollow Tine hardened

Page 19

Hollow Tine carbide tipped flat chisel hardened

Page 20

Cross Tine hardened / carbide tipped

Page 21

Solid Tine hardened & Konispoon® round hardened

Page 22

## **GROUNDSMAN**

Hollow Tine hardened

Page 23

Hollow Tine carbide tipped

Page 24

Cross Tine hardened & carbide tipped

Page 25

Solid Tine hardened & Konispoon® needle hardened

Page 26

## **RANSOMES / JACOBSEN / RYAN GA30**

Hollow Tine hardened	Page 27
Hollow Tine carbide tipped & Flat chisel tine hardened	Page 28
Cross Tine hardened / carbide tipped	Page 29
Solid Tine hardened & Konispoon® needle hardened	Page 30

## **SOIL RELIEVER/ SELVATICI**

Hollow Tine hardened	Page 31
Hollow Tine carbide tipped	Page 32
Cross Tine hardened / carbide tipped / flat chisel hardened	Page 33
Solid Tine hardened	Page 34 - 35

## **TORO**

Hollow Tine hardened	Page 36 - 37
Hollow Tine carbide tipped & Konispoon® needle round hardened	Page 38
Cross Tine hardened & carbide tipped	Page 39
Flat chisel hardened & Solid Tine hardened	Page 40

## **WIEDENMANN**

Hollow Tine hardened	Page 41
Hollow Tine carbide tipped / Terra Rake Replacement Tine	Page 42
Cross Tine hardened / carbide tipped / Konispoon® Flat chisel hardened	Page 43
Solid Tine hardened	Page 44 - 45

## **BRUSHES**

CAMPEY™ - Hand Brush	Page 46
Brush Sections – Toro Front mounted greens brushes	Page 47
Brush Sections – Wessex / Tomlin	Page 47
Brush Sections – Sisis	Page 48

## **ACCESSORIES**

Back-Lapping Paste	Page 49
Digital Gauges	Page 50 - 51
Top Links (incl.Hydraulic) & PTO Shaft Assemblies and Safety guards	Page 52
Replacement Seats	Page 53
TAS Trimmer heads	Page 54
Airrex AH-300i Infrared Bio Heater	Page 55

## **CAMPEY™ PRODUCTS**

CAMPEY™ - Seed Shot™	Page 56
Imants Penetrometer	Page 57
Dennis Back Lapping Kits	Page 58

# Verticut / Scarifying / Slitting Blades

## Amazone – Scarifying Blade

Part No.	Construction	Number of Edges	Working Width	Total Length	Price £
8746000	Hardened	1-cut	2 mm	85 mm	2.60
8746000H	Carbide Tipped	1-cut	2 mm	85 mm	5.35
8356000	Hardened	1-cut	3 mm	85 mm	2.60
8356000H	Carbide Tipped	1-cut	3 mm	85 mm	5.35

## Graden – Scarifying Blade

Part No.	Construction	Number of Edges	Working Width	Ø	Price £
1901768H	Carbide Tipped	8-cut	1.5 mm	190 mm	24.00
1902467H	Carbide Tipped	8-cut	2 mm	190 mm	24.00
1903588H	Carbide Tipped	8-cut	3 mm	190 mm	24.00
1901769H	Carbide Tipped	8-cut	1.5 mm	210 mm	26.00
1902729H	Carbide Tipped	8-cut	2 mm	210 mm	26.00
1903751H	Carbide Tipped	8-cut	3 mm	210 mm	26.00

## Jacobsen – Green King IV and V - Scarifying Blade

Part No.	Construction	Number of Edges	Working Width	Ø	Price £
335449	Hardened	7-cut	0.8 mm	135 mm	5.40
1102405H	Carbide Tipped	11-cut	2 mm	135 mm	15.00

# Verticut / Scarifying / Slitting Blades

## John Deere – Scarifying Blade

Part No.	Construction	Number of Edges	Working Width	Total Length	Price £
1102406H Side Wing	Carbide Tipped	11-cut	2 mm	135 mm	14.15

## Ryan / Mataway – Verticut / Scarifying Blade

Part No.	Construction	Number of Edges	Working Width	Ø	Price £
516900	Hardened	2-cut	1.6 mm	185 mm	4.15
516898	Hardened	2-cut	3 mm	185 mm	4.25
1914291H	Carbide Tipped	5-cut	2 mm	185 mm	19.25

## Sisis – Scarifying Blade

Part No.	Construction	Number of Edges	Working Width	Ø	Price £
2245745 Auto-Rotorake	Hardened	2-cut	2 mm	220 mm	5.75
2245745H Auto-Rotorake	Carbide Tipped	2-cut	2 mm	220 mm	10.70
3660835H Sisis Rotorake 600	Carbide Tipped	2-cut	1.3 mm	240 mm	10.20
3610636H Sisis Rotorake 600	Carbide Tipped	2-cut	2 mm	240 mm	14.10
3623137H Sisis Rotorake 600	Carbide Tipped	2-cut	3 mm	240 mm	11.25

# Verticut / Scarifying / Slitting Blades

## Huxley – Verticut & Slitting Blades

Part No.	Construction	Number of Edges	Working Width	Ø	Price £
AGO241	Hardened Slitting Triangle	2	4 mm	300 mm	12.48
AGO242H	Hardened Slitting Triangle	2	6 mm	300 mm	26.85
4016739	Hardened Verticut	2	2 mm	240 mm	9.10
4016739H	Carbide Tipped Verticut	2	2 mm	240mm	15.00

## Long Equip / Trilo – Scarifying Blade

Part No.	Construction	Number of Edges	Working Width	Total Length	Price £
1332726	Hardened	1	3 mm	135 mm	4.20
1332726H	Carbide Tipped	1	3.2 mm	135 mm	8.50
AG00379 Fan Paddle	Hardened	1	110 mm	115 mm	23.55

## Toro – Verticut Blade

Part No.	Construction	Number of Edges	Working Width	Ø	Price £
1105404H Reel Side Wing	Carbide Tipped	11-cut	2 mm	135 mm	14.15

## Wiedenmann – Scarifying Blade

Part No.	Construction	Number of Edges	Working Width	Total Length	Price £
W3085250	Hardened	1-cut	3 mm	85 mm	2.85
W3085250H	Carbide Tipped	1-cut	3 mm	85 mm	5.80



# Tine Adaptors

## Tine Adaptors

Part No.	Mounting / Outer Ø	Inside Ø	Machine	Price £
2351853	24mm	18mm	SELVATICI/SOIL RELIEVER/ VERTIDRAIN COMPATIBLE	7.30
1214032	22.3mm	12mm	TORO/JOHN DEERE	6.30
2239270	22.3mm	9.5mm	JOHN DEERE/TORO	6.30
2214061	22.3 mm	8 mm	JOHN DEERE/TORO	6.30
1214031	19 mm	12 mm	JOHN DEERE/RANSOMES/ RYAN/TORO/MULTICORE/ GROUNDSMAN	7.20
1925117	19 mm	9.5 mm	JOHN DEERE/RANSOMES/ RYAN/VERTICORE/TORO/ MULTICORE/GROUNDSMAN	6.60
1908248	19 mm	8 mm	JOHN DEERE/RANSOMES/ RYAN/VERTICORE/TORO/ MULTICORE/GROUNDSMAN	6.30
1906431	19 mm	6 mm	JOHN DEERE/VERTICORE/ MULTICORE	6.30
1812781	18 mm	12 mm	VERTIDRAIN COMPATIBLE	7.40
1209475	12.7 mm	6 mm	RANSOMES/RYAN GROUNDSMAN	6.30
W1208067	12 mm	8 mm	WIEDENMANN	4.70
1208067	12 mm	8 mm	VERTIDRAIN COMPATIBLE/SELVATICI/ SOIL RELIEVER	4.70
1206456	12 mm	6 mm	VERTIDRAIN COMPATIBLE/SELVATICI	4.70
9506403	9.5 mm	6 mm	SOIL RELIEVER TORO	6.30



## The new **tiny tine**<sup>®</sup> literally is the tiniest performance star out of all hollow tines.

The new **tiny tine**<sup>®</sup> is literally the tiniest performance star out of all hollow tines. With a total length of only 115 mm and an outside diameter of 8 mm, as well as a core diameter of 5,5 mm it can reach a working depth of up to 50 mm. It really is the smallest hollow tine with the biggest core possible.

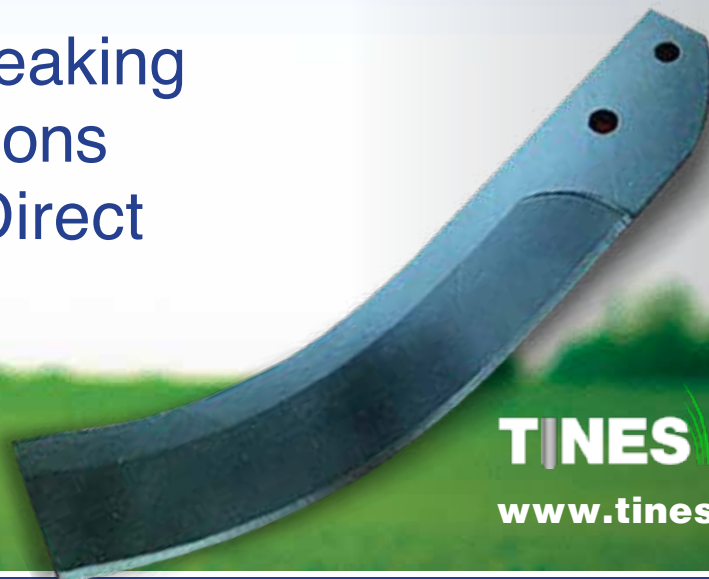
### **tiny tine**<sup>®</sup>

#### **tiny tine**<sup>®</sup>

Part No.	Mount	Side	Core	Price £
9508951 Side Eject	9.5mm	8mm	5.5mm	£7.80



# Groundbreaking new additions to Tines Direct



**TINES** DIRECT  
www.tinesdirect.com

## Blec GroundBreaker / Sandmaster blades

Blec GroundBreaker	12mm blade	BL12B0060/12	£45.00
Blec GroundBreaker	15mm blade	BL12B0060/15	£50.00

## Aera-Vator

### 3 inch Spike Tine

Part No.	Thread Ø	Outside Ø	Total Length	Spike Length	Price £
TD50-058	5/8" NF	5/8"	120 mm	3"	8.35



**NEW**



*The length measurements refer to the total length of the tools. Our general Terms and Conditions apply.*

*Prices plus VAT, freight and additional costs. Allowing for price and technical changes.*

# Verti-Core / Rapidcore

## Hollow Tines

Part No.	Mounting Ø	Outside Ø	Total Length	Core Ø	Price £
08-9513123 Side Eject	8 mm	9.5 mm	125 mm	5 mm	6.30
1008755 Side Eject	8 mm	11 mm	130 mm	6 mm	6.30
1912807 Side Eject	19 mm	12 mm	155 mm	6 mm	8.70
1912771 Side Eject	19 mm	12.7 mm	125 mm	9 mm	4.25
1914415 Side Eject	19 mm	12.7 mm	145 mm	9 mm	4.45
1615765 Side Eject	19 mm	16 mm	155 mm	9.5 mm	11.35
1912761 Side Eject	19 mm	16 mm	125 mm	12 mm	4.25
1914417 Side Eject	19 mm	16 mm	145 mm	12 mm	4.45
2015766 Side Eject	19 mm	20 mm	155 mm	13 mm	11.60
2514260 Side Eject	19 mm	26 mm	180 mm	16 mm	12.45
4019749 Side Eject	19 mm	40 mm	145 mm	30 mm	30.05

## Hollow Tines with Carbide Tip

Part No.	Mounting Ø	Outside Ø	Total Length	Core Ø	Price £
08-9513123H Side Eject	8 mm	11 mm	135 mm	5.5 mm	9.20
1912807H Side Eject	19 mm	12 mm	155 mm	6 mm	11.05
1615765H Side Eject	19 mm	16 mm	155 mm	9 mm	16.40
2015766H Side Eject	19 mm	20 mm	155 mm	12 mm	17.00

# Verti-Core / Rapidcore

## Cross Tines

Part No.	Mounting Ø	Outside Ø	Total Length	Rib Width	Price £
9510720	9.5 mm	9.5 mm	102 mm	1.5 mm	8.90
1916900	19 mm	12 mm	160 mm	2.5 mm	13.60
2019457	19 mm	20 mm	140 mm	3.0 mm	13.70
2419459	19 mm	24 mm	140 mm	5.0 mm	17.65
2619461	19 mm	26 mm	140 mm	5.0 mm	17.65

## Cross Tines with Carbide Tip

Part No.	Mounting Ø	Outside Ø	Total Length	Rib Width	Price £
1214012H	19 mm	12 mm	145 mm	2.5 mm	15.80

## Solid Tines

Part No.	Mounting Ø	Outside Ø	Total Length	Price £
0614402	6 mm	6 mm	140 mm	1.70
0815052	8 mm	8 mm	150 mm	2.40
1906872	19 mm	6 mm	160 mm	6.80
1908873	19 mm	8 mm	160 mm	6.80
1910929	19 mm	10 mm	160 mm	6.90
1912774	19 mm	12 mm	160 mm	6.50
1916785	19 mm	16 mm	160 mm	6.50
1919799	19 mm	19 mm	160 mm	6.30

## Verti-Drain (compatible with)

### Hollow Tines

*(All Vertidrain compatible Hollow tines are Side Eject) |*

*Produced from a full steel billet, shatter-proof with long term durability*

Part No.	Mounting Ø	Outside Ø	Total Length	Core Ø	Price £
1008755	8 mm	11 mm	150 mm	6 mm	6.30
1214770	12 mm	12 mm	160 mm	6.5 mm	8.55
1618001	12 mm	16 mm	180 mm	9.5 mm	12.45
1624001	12 mm	16 mm	225 mm	9.5 mm	14.15
2018002	12 mm	20 mm	180 mm	12 mm	15.35
2024002	12 mm	20 mm	225 mm	12 mm	18.05
2031004	12 mm	20 mm	295 mm	12 mm	21.50
2031003	18 mm	20 mm	295 mm	12 mm	22.35
2531005	18 mm	26 mm	310 mm	16 mm	32.15
2536042	18 mm	26 mm	360 mm	16 mm	27.65
2531006	24 mm	26 mm	310 mm	16 mm	32.15
3036007	18 mm	30 mm	360 mm	21 mm	39.45
3036008	24 mm	30 mm	360 mm	21 mm	36.30
3536010	24 mm	35 mm	360 mm	27 mm	41.70



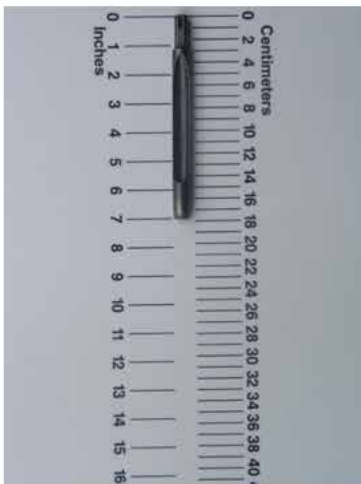
For more information and advice please visit [www.tinesdirect.com](http://www.tinesdirect.com)

# Verti-Drain (compatible with)

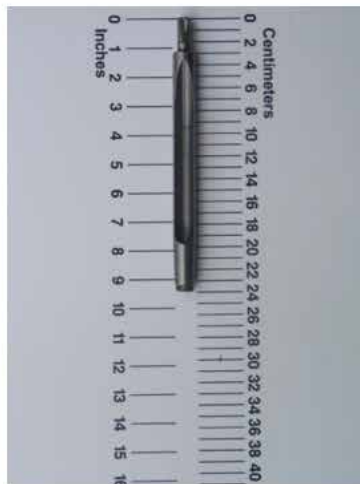
## Hollow Tines Carbide Tipped

*(All Vertidrain compatible Hollow tines are Side Eject)*

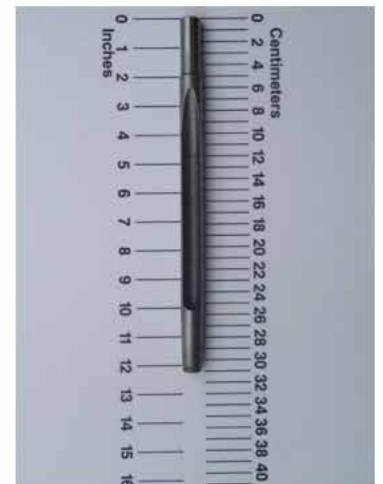
Part No.	Mounting Ø	Outside Ø	Total Length	Core Ø	Price £
1618001H	12 mm	16 mm	180 mm	9 mm	29.40
1624001H	12 mm	16 mm	225 mm	9 mm	30.60
2018002H	12 mm	20 mm	180 mm	12 mm	31.25
2024002H	12 mm	20 mm	225 mm	12 mm	33.50
2024119H	18 mm	20 mm	225 mm	12 mm	33.70
2031004H	12 mm	20 mm	295 mm	12 mm	38.45
2031003H	18 mm	20 mm	295 mm	12 mm	38.45
2531005H	18 mm	26 mm	310 mm	16 mm	44.20
2536042H	18 mm	26 mm	360 mm	16 mm	47.65
2531006H	24 mm	26 mm	310 mm	16 mm	44.20



1618001H



2024002H

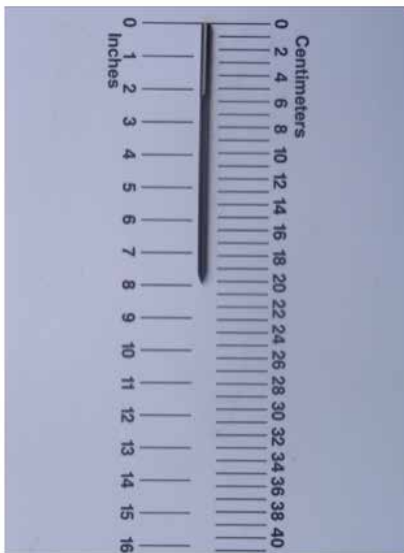


2031003H

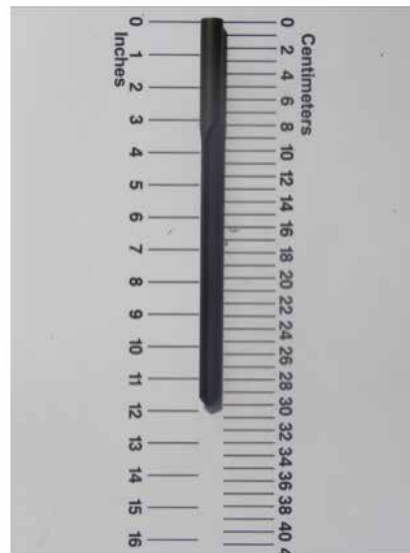
# Verti-Drain (compatible with)

## Cross Tines

Part No.	Mounting Ø	Outside Ø	Total Length	Core Ø	Price £
0820719	8 mm	8 mm	200 mm	1.5 mm	8.25
1214012V	12 mm	12 mm	145 mm	2.5 mm	11.25
1220244	12 mm	12 mm	200 mm	2.5 mm	13.10
1225830	12 mm	12 mm	250 mm	2.5 mm	15.60
1218452	12 mm	18 mm	200 mm	3 mm	15.60
1832453	18 mm	18 mm	320 mm	3 mm	24.85
2235412	18 mm	22 mm	320 mm	5 mm	27.15
2432473	18 mm	24 mm	320 mm	5 mm	30.05
2532454	24 mm	24 mm	320 mm	5 mm	30.05



0820719



1832453



## Verti-Drain (compatible with)

### Solid Tines

Part No.	Mounting Ø	Outside Ø	Total Length	Price £
0614402	6 mm	6 mm	140 mm	1.70
0620455	6 mm	6 mm	175 mm	1.85
0817511	8 mm	8 mm	175 mm	2.20
0820049	8 mm	8 mm	200 mm	2.50
0825064	8 mm	8 mm	250 mm	2.70
0830716	8 mm	8 mm	300 mm	2.60
1208800	8 mm	12 mm	155 mm	5.40
1220055	12 mm	12 mm	200 mm	2.60
1225056	12 mm	12 mm	250 mm	2.85
1230012	12 mm	12 mm	300 mm	3.25
1236013	12 mm	12 mm	360 mm	3.70
1612760	12 mm	16 mm	200 mm	6.70
1612837	12 mm	16 mm	250 mm	8.35
1820823	12 mm	18 mm	200 mm	8.55
1825779	12 mm	18 mm	250 mm	8.75
1825807	18 mm	18 mm	250 mm	5.64

*(Solid Tines Hardened continued on next page)*



For more information and advice please visit [www.tinesdirect.com](http://www.tinesdirect.com)

## Verti-Drain (compatible with)

### Solid Tines

Part No.	Mounting Ø	Outside Ø	Total Length	Price £
1830014	18 mm	18 mm	300 mm	5.85
1835015	18 mm	18 mm	350 mm	6.20
1840016	18 mm	18 mm	400 mm	6.70
1845043	18 mm	18 mm	450 mm	6.95
2535018	18 mm	24 mm	350 mm	10.80
2535019	24 mm	24 mm	350 mm	12.80
2540020	24 mm	24 mm	400 mm	15.00
2545021	24 mm	24 mm	450 mm	15.45
4520841	24 mm	50 mm	300 mm	43.10

### Flat / Chisel Tine

Part No.	Mounting Ø	Element Width	Element Thickness	Total Length	Price £
W1219844	12 mm	19 mm	6 mm	220 mm	15.30



For more information and advice please visit [www.tinesdirect.com](http://www.tinesdirect.com)

# John Deere / Multicore

## Hollow Tines

Part No.	Mounting Ø	Outside Ø	Total Length	Core Ø	Price £
9513123 Side Eject	9.5 mm	9.5 mm	125 mm	5 mm	6.35
9514745 Side Eject	9.5 mm	11 mm	145 mm	6 mm	7.55
1912807 Side Eject	19 mm	12 mm	155 mm	6 mm	8.70
1912130 Top Eject	19 mm	12.7 mm	125 mm	10mm	2.40
1912771 Side Eject	19 mm	12.7 mm	125 mm	9 mm	4.25
1914132 Top Eject	19 mm	12.7 mm	145 mm	10mm	2.90
1914415 Side Eject	19 mm	12.7 mm	145 mm	10mm	4.45
1615765 Side Eject	19 mm	16 mm	155 mm	9.5mm	11.35
1912761 Side Eject	19 mm	16 mm	125 mm	12mm	4.25
1914136 Top Eject	19 mm	16 mm	145 mm	13mm	2.85
1914417 Side Eject	19 mm	16 mm	145 mm	12 mm	4.45
2015766 Side Eject	19 mm	20 mm	155 mm	13 mm	11.60
1916886 Top Eject	19 mm	16 mm	165 mm	13 mm	3.30
2514260 Side Eject	19 mm	26 mm	140 mm	16 mm	12.45
2514266 Side Eject	22.3 mm	26 mm	140 mm	16 mm	11.70



For more information and advice please visit [www.tinesdirect.com](http://www.tinesdirect.com)

# John Deere / Multicore

## Hollow Tines Carbide Tipped

Part No.	Mounting Ø	Outside Ø	Total Length	Core Ø	Price £
9513123H Side Eject	9.5 mm	11 mm	145 mm	5.5 mm	9.05
1912807H Side Eject	19 mm	12 mm	155 mm	6 mm	11.05
1912131H Top Eject	19 mm	12.7 mm	125 mm	9 mm	11.75
1914133H Top Eject	19 mm	12.7 mm	145 mm	9 mm	11.90
1914416H Side Eject	19 mm	12.7 mm	145 mm	9 mm	15.30
1615765H Side Eject	19 mm	16 mm	155 mm	9 mm	16.40
1912135H Top Eject	19 mm	16 mm	125 mm	12 mm	11.35
1914137H Top Eject	19 mm	16 mm	145 mm	12 mm	11.90
2015766H Side Eject	19 mm	20 mm	155 mm	12 mm	17.00

## Flat / Chisel Tines

Part No.	Mounting Ø	Element Width	Element Thickness	Total Length	Price £
1219841	19 mm	19 mm	6 mm	140 mm	11.25
1219842	19 mm	19 mm	6 mm	160 mm	13.90



For more information and advice please visit [www.tinesdirect.com](http://www.tinesdirect.com)

# John Deere / Multicore

## Cross Tines

Part No.	Mounting Ø	Outside Ø	Total Length	Rib Width	Price £
9515750	9.5 mm	9.5 mm	140 mm	1.5 mm	8.30
9516825	9.5 mm	9.5 mm	160 mm	1.5 mm	9.20
9514120	9.5 mm	12 mm	135 mm	2.5 mm	11.50
1916900	19 mm	12 mm	160 mm	2.5 mm	13.60
2019457	19 mm	20 mm	140 mm	3 mm	13.70
2419459	19 mm	24 mm	140 mm	5 mm	17.65
2422460	22.3 mm	24 mm	140 mm	5 mm	17.10
2619461	19 mm	26 mm	140 mm	5 mm	17.65
2622462	22.3 mm	26 mm	140 mm	5 mm	17.65

## Cross Tines Carbide Tipped

Part No.	Mounting Ø	Outline Ø	Total Length	Rib Width	Price £
9514120H	9.5 mm	12 mm	135 mm	2.5 mm	15.80
1214012H	19 mm	12 mm	145 mm	2.5 mm	15.80



For more information and advice please visit [www.tinesdirect.com](http://www.tinesdirect.com)

# John Deere / Multicore

## Solid Tines

Part No.	Mounting Ø	Outside Ø	Total Length	Price £
0105180	5 mm elbow	5 mm	180 mm	4.25
0108180	8 mm elbow	8 mm	180 mm	4.05
0614402	6 mm	6 mm	140 mm	1.50
0815052	8 mm	8 mm	150 mm	2.40
9512450	9.5 mm	9.5 mm	120 mm	1.65
9515045	9.5 mm	9.5 mm	150 mm	1.80
1906872	19 mm	6 mm	160 mm	6.80
1908873	19 mm	8 mm	160 mm	6.80
1910929	19 mm	10 mm	160 mm	6.80
1912774	19 mm	12 mm	160 mm	6.90
1916785	19 mm	16 mm	160 mm	6.50
1919799	19 mm	19 mm	160 mm	6.30
2231685	22.3 mm	16 mm	140 mm	10.20

## Konispoon® Round Needle

Part No.	Mounting Ø	Outside Ø	Total Length	Price £
9505847K	9.5 mm	5 mm	140 mm	6.30
9505846K	9.5 mm	5 mm	160 mm	6.30
9506842K	9.5 mm	6 mm	140 mm	6.30
9506845K	9.5 mm	6 mm	160 mm	6.30

# Groundsman

## Hollow Tines

Part No.	Mounting Ø	Outside Ø	Total Length	Core Ø	Price £
9513123 Side Eject	9.5 mm	9.5 mm	125 mm	5 mm	6.35
1615522 Side Eject	16 mm	16 mm	155 mm	9.4 mm	9.60
2015523 Side Eject	16 mm	20 mm	155 mm	12.5 mm	9.95
1912807 Side Eject	19 mm	12 mm	155 mm	6 mm	8.70
1912130 Top Eject	19 mm	12.7 mm	125 mm	10 mm	2.40
1914132 Top Eject	19 mm	12.7 mm	145 mm	10 mm	2.90
1912771 Side Eject	19 mm	12.7 mm	125 mm	10 mm	4.25
1914415 Side Eject	19 mm	12.7 mm	145 mm	10 mm	4.45
1914136 Top Eject	19 mm	16 mm	145 mm	13 mm	2.85
1912761 Side Eject	19 mm	16 mm	125 mm	13 mm	4.25
1914417 Side Eject	19 mm	16 mm	145 mm	13 mm	4.45
1916886 Top Eject	19 mm	16 mm	165 mm	13mm	3.30
1916887 Top Eject	19 mm	12.7 mm	165 mm	10mm	3.30
2514260 Side Eject	19 mm	26 mm	140 mm	16 mm	12.45
2514266 Side Eject	22.3 mm	26 mm	140 mm	16 mm	11.70

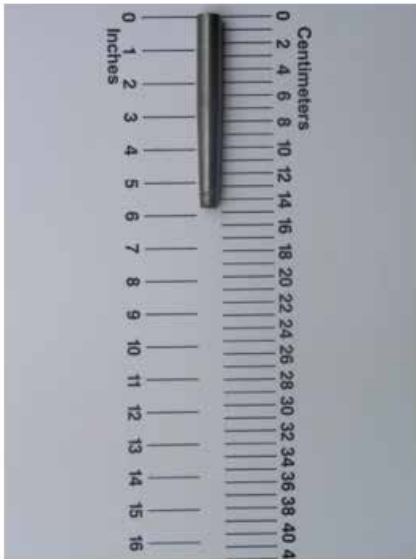


For more information and advice please visit [www.tinesdirect.com](http://www.tinesdirect.com)

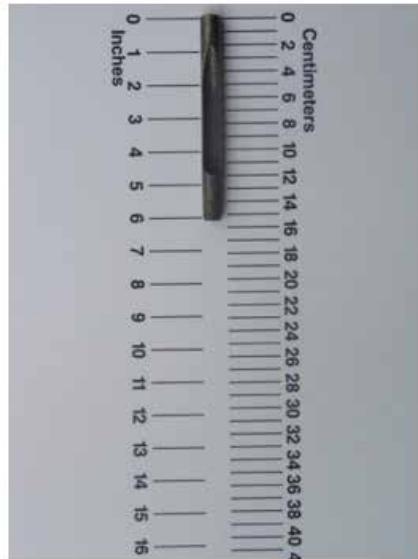
# Groundsman

## Hollow Tines Carbide Tipped

Part No.	Mounting Ø	Outside Ø	Total Length	Core Ø	Price £
9513123H Side Eject	9.5 mm	11 mm	145 mm	5.5 mm	9.05
1615522H Side Eject	16 mm	16 mm	155 mm	9.5 mm	15.80
2015523H Side Eject	16 mm	20 mm	155 mm	12.5 mm	15.80
1912807H Side Eject	19 mm	12 mm	155 mm	6 mm	11.05
1912131H Top Eject	19 mm	12.7 mm	125 mm	9 mm	11.75
1914133H Top Eject	19 mm	12.7 mm	145 mm	9 mm	11.90
1912135H Top Eject	19 mm	16 mm	125 mm	12 mm	11.35
1914137H Top Eject	19 mm	16 mm	145 mm	12 mm	11.90



1914133H



1615522H



# Groundsman

## Cross Tines

Part No.	Mounting Ø	Outside Ø	Total Length	Rib Width	Price £
9514120	9.5 mm	12 mm	135 mm	2.5 mm	11.45
1274121	12.7 mm	12 mm	140 mm	2.5 mm	15.35
2014463	16 mm	20 mm	140 mm	2.5 mm	12.45
1916900	19 mm	12 mm	160 mm	2.5 mm	13.60
2019457	19 mm	20 mm	140 mm	3 mm	13.70
2419459	19 mm	24 mm	140 mm	5 mm	17.65
2619461	19 mm	26 mm	140 mm	5 mm	17.65

## Cross Tines Carbide Tipped

Part No.	Mounting Ø	Outside Ø	Total Length	Rib Width	Price £
9514120H	9.5 mm	12 mm	135 mm	2.5 mm	15.80
1214012H	19 mm	12 mm	140 mm	2.5 mm	15.80
1274121H	12.7 mm	12 mm	140 mm	2.5 mm	15.35



For more information and advice please visit [www.tinesdirect.com](http://www.tinesdirect.com)

# Groundsman

## Solid Tines

Part No.	Mounting Ø	Outside Ø	Total Length	Price £
0614402	6 mm	6 mm	140 mm	1.70
0815052	8 mm	8 mm	150 mm	2.40
9512450	9.5 mm	9.5 mm	120 mm	1.70
9515045	9.5 mm	9.5 mm	150 mm	2.40
1206140	12mm	6 mm	140 mm	6.55
1208140	12 mm	8 mm	140 mm	6.70
1210140	12 mm	10 mm	140 mm	6.55
1906872	19 mm	6 mm	160 mm	6.80
1908873	19 mm	8 mm	160 mm	6.80
1910929	19 mm	10 mm	160 mm	6.80
1912774	19 mm	12 mm	160 mm	6.90
1916785	19 mm	16 mm	160 mm	6.50
1919799	19 mm	19 mm	160 mm	6.30

## Konispoon® Round Needle

Part No.	Mounting Ø	Outside Ø	Total Length	Price £
9505847K	9.5 mm	5 mm	140	6.30
9505846K	9.5 mm	5 mm	160	6.30
9506842K	9.5 mm	6 mm	140	6.30
9506845K	9.5 mm	6 mm	160	6.50

# Ransomes / Jacobsen / Ryan GA30

## Hollow Tines

Part No.	Mounting Ø	Outside Ø	Total Length	Core Ø	Price £
9513123 Side Eject	9.5 mm	9.5 mm	125 mm	5 mm	6.35
9514745 Side Eject	9.5 mm	11 mm	145 mm	6 mm	7.55
1912807 Side Eject	19 mm	12 mm	155 mm	6 mm	8.70
1612474 Side Eject	16 mm	12.7 mm	125 mm	10 mm	6.30
1615522 Side Eject	16 mm	16 mm	155 mm	10 mm	9.60
2015523 Side Eject	16 mm	20 mm	155 mm	13 mm	9.95
1912130 Top Eject	19 mm	12.7 mm	125 mm	10 mm	2.40
1914132 Top Eject	19 mm	12.7 mm	145 mm	10 mm	2.90
1914415 Side Eject	19 mm	12.7 mm	145 mm	10 mm	4.45
1916887 Top Eject	19 mm	12.7 mm	165 mm	10 mm	3.30
1615765 Side Eject	19 mm	16 mm	155 mm	9.5 mm	11.35
1914136 Top Eject	19 mm	16 mm	145 mm	13 mm	2.85
1914417 Side Eject	19 mm	16 mm	145 mm	12 mm	4.45
2015766 Side Eject	19 mm	20 mm	155 mm	13 mm	11.60
1916886 Top Eject	19 mm	16 mm	165 mm	13 mm	3.30
2514260 Side Eject	19 mm	26 mm	140 mm	16 mm	12.45



For more information and advice please visit [www.tinesdirect.com](http://www.tinesdirect.com)

# Ransomes / Jacobsen / Ryan GA30

## Hollow Tines Carbide Tipped

Part No.	Mounting Ø	Outside Ø	Total Length	Core Ø	Price £
9513123H Side Eject	9.5 mm	11 mm	145 mm	5.5 mm	9.05
2015523H Side Eject	16 mm	20 mm	155 mm	12.5 mm	15.80
1912807H Top Eject	19 mm	12 mm	155 mm	6 mm	11.05
1912131H Top Eject	19 mm	12.7 mm	125 mm	9 mm	11.75
1914133H Top Eject	19 mm	12.7 mm	145 mm	9 mm	11.90
1914416H Side Eject	19 mm	12.7 mm	145 mm	9 mm	15.30
1615765H Side Eject	19 mm	16 mm	155 mm	9 mm	16.40
1912135H Top Eject	19 mm	16 mm	125 mm	12 mm	10.50
1914137H Top Eject	19 mm	16 mm	145 mm	12 mm	11.35
2015766H Side Eject	19 mm	20 mm	155 mm	12 mm	17.00

## Flat / Chisel Tines

Part No.	Mounting Ø	Element Width	Element Thickness	Total Length	Price £
1219841	19 mm	19 mm	6 mm	140 mm	11.25
1219842	19 mm	19 mm	6 mm	160 mm	13.90



For more information and advice please visit [www.tinesdirect.com](http://www.tinesdirect.com)

# Ransomes / Jacobsen / Ryan GA30

## Cross Tines

Part No.	Mounting Ø	Outside Ø	Total Length	Rib Width	Price £
9510720	9.5 mm	9.5 mm	102 mm	1.5 mm	8.90
9516825	9.5 mm	9.5 mm	160 mm	1.5 mm	9.20
9514120	9.5 mm	12 mm	135 mm	2.5 mm	11.45
1916900	19 mm	12 mm	160 mm	2.5 mm	13.60
1274121	12.7 mm	12 mm	140 mm	2.5 mm	10.80
2014463	16 mm	20 mm	140 mm	3 mm	13.70
2019457	19 mm	20 mm	140 mm	3 mm	13.70
2419459	19 mm	24 mm	140 mm	5 mm	17.65
2619461	19 mm	26 mm	140 mm	5 mm	17.65

## Cross Tines Carbide Tipped

Part No.	Mounting Ø	Outside Ø	Total Length	Rib Width	Price £
9514120H	9.5 mm	12 mm	135 mm	2.5 mm	15.80
1214012H	19 mm	12 mm	145 mm	2.5 mm	15.80
1274121H	12.7 mm	12 mm	140 mm	2.5 mm	15.35



For more information and advice please visit [www.tinesdirect.com](http://www.tinesdirect.com)

# Ransomes / Jacobsen / Ryan GA30

## Solid Tines

Part No.	Mounting Ø	Outside Ø	Total Length	Price £
0614402	6 mm	6 mm	140 mm	1.70
0815052	8 mm	8 mm	150 mm	2.40
9512450	9.5 mm	9.5 mm	120 mm	1.70
9515045	9.5 mm	9.5 mm	150 mm	2.40
1271796	12.7 mm	8 mm	140 mm	7.90
1906872	19 mm	6 mm	160 mm	6.80
1908873	19 mm	8 mm	160 mm	6.80
1910929	19 mm	10 mm	160 mm	6.80
1912774	19 mm	12 mm	160 mm	6.90
1916785	19 mm	16 mm	160 mm	6.50
1919799	19 mm	19 mm	160 mm	6.30

## Konispoon® Round Needle

Part No.	Mounting Ø	Outside Ø	Total Length	Price £
9505847K	9.5mm	5mm	140mm	6.30
9505846K	9.5mm	5mm	160mm	6.30
9506842K	9.5mm	6mm	140mm	6.30
9506845K	9.5mm	6mm	160mm	6.50

# Soil Reliever SR75

## Hollow Tines

*(All Soil Reliever/Selvatici Hollow tines are Side Eject)*

*Produced from a full steel billet, shatter-proof with long term durability*

Part No.	Mounting Ø	Outside Ø	Total Length	Core Ø	Price £
1008755	8 mm	11 mm	150 mm	6 mm	6.30
1214770	12 mm	12 mm	160 mm	6.5 mm	8.55
1618001	12 mm	16 mm	180 mm	9.5 mm	12.45
1624001	12 mm	16 mm	225 mm	9.5 mm	14.15
2018002	12 mm	20 mm	180 mm	12 mm	15.35
2024002	12 mm	20 mm	225 mm	12 mm	18.05
2031004	12 mm	20 mm	295 mm	12 mm	21.50
2031003	18 mm	20 mm	295 mm	12 mm	22.35
2531005	18 mm	26 mm	310 mm	16 mm	32.15
2536042	18 mm	26 mm	360 mm	16 mm	27.65
2531006	24 mm	26 mm	310 mm	16 mm	32.15
3036007	18 mm	30 mm	360 mm	21 mm	39.45
3036008	24 mm	30 mm	360 mm	21 mm	36.30
3536010	24 mm	35 mm	360 mm	27 mm	41.70



For more information and advice please visit [www.tinesdirect.com](http://www.tinesdirect.com)

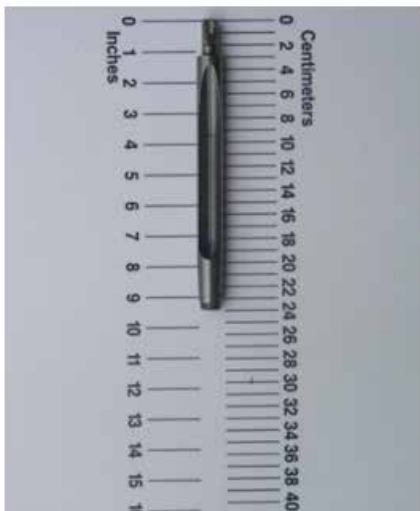
# Soil Reliever SR75

## Hollow Tines Carbide Tipped

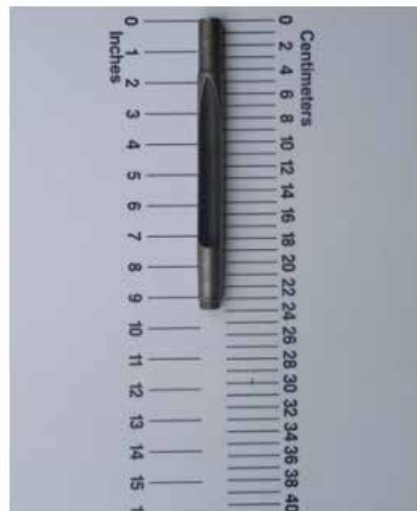
*(All Soil Reliever/Selvatici Hollow tines are Side Eject)*

*Produced from a full steel billet, shatter-proof with long term durability*

Part No.	Mounting Ø	Outside Ø	Total Length	Core Ø	Price £
1618001H	12 mm	16 mm	180 mm	9 mm	25.85
1624001H	12 mm	16 mm	225 mm	9 mm	30.60
2018002H	12 mm	20 mm	180 mm	12 mm	31.25
2024002H	12 mm	20 mm	225 mm	12 mm	33.50
2024119H	18 mm	20 mm	225 mm	12 mm	33.70
2031004H	12 mm	20 mm	295 mm	12 mm	38.45
2031003H	18 mm	20 mm	295 mm	12 mm	38.45
2531005H	18 mm	26 mm	310 mm	16 mm	44.20
2536042H	18 mm	26 mm	360 mm	16 mm	47.65
2531006H	24 mm	26 mm	310 mm	16 mm	44.20



2024002H



2024119H



# Soil Reliever SR75

## Cross Tines

Part No.	Mounting Ø	Outside Ø	Total Length	Rib Width	Price £
0820719	8 mm	8 mm	200 mm	1.5 mm	8.25
1214012V	12 mm	12 mm	145 mm	2.5 mm	11.25
1220244	12 mm	12 mm	200 mm	2.5 mm	13.10
1225830	12 mm	12 mm	250 mm	2.5 mm	15.60
1218452	12 mm	18 mm	200 mm	3 mm	15.80
1832453	18 mm	18 mm	320 mm	3 mm	24.85
2235412	18 mm	22 mm	320 mm	5 mm	27.15
2432473	18 mm	24 mm	320 mm	5 mm	30.05
2532454	24 mm	24 mm	320 mm	5 mm	30.05

## Cross Tines Carbide Tipped

Part No.	Mounting Ø	Outside Ø	Total Length	Rib Width	Price £
1220244H	12 mm	12 mm	200 mm	2.5 mm	16.35

## Flat / Chisel Tine

Part No.	Mounting Ø	Element Width	Element Thickness	Total Length	Price £
W1219844	12 mm	19 mm	6 mm	220 mm	15.30

*The length measurements refer to the total length of the tools. Our general Terms and Conditions apply. Prices plus VAT, freight and additional costs. Allowing for price and technical changes.s.*

# Soil Reliever SR75

## Solid Tines

Part No.	Mounting Ø	Outside Ø	Total Length	Price £
0614402	6mm	6 mm	140 mm	1.70
0620455	6 mm	6 mm	175 mm	1.85
0817511	8 mm	8 mm	175 mm	2.20
0820049	8 mm	8 mm	200 mm	2.50
0825064	8 mm	8 mm	250 mm	2.70
0830716	8 mm	8 mm	300 mm	2.70
1208800	8 mm	12 mm	155 mm	5.40
1220055	12 mm	12 mm	200 mm	2.60
1225056	12 mm	12 mm	250 mm	2.85
1230012	12 mm	12 mm	300 mm	3.25
1236013	12 mm	12 mm	360 mm	3.70
1612760	12 mm	16 mm	200 mm	6.70
1612837	12 mm	16 mm	250 mm	8.35
1825779	12 mm	18 mm	250 mm	8.75

*(Solid Tines Hardened continued on next page)*



For more information and advice please visit [www.tinesdirect.com](http://www.tinesdirect.com)

# Soil Reliever SR75

## Solid Tines

Part No.	Mounting Ø	Outside Ø	Total Length	Price £
1825807	18 mm	18 mm	250 mm	5.65
1830014	18 mm	18 mm	300 mm	5.85
1835015	18 mm	18 mm	350 mm	6.20
1840016	18 mm	18 mm	400 mm	6.10
1845043	18 mm	18 mm	450 mm	6.95
2235105	18 mm	22 mm	350 mm	10.30
2535018	18 mm	24 mm	350 mm	14.20
2240803	22 mm	22 mm	400 mm	11.15
2535019	24 mm	24 mm	350 mm	12.08
2540020	24 mm	24 mm	400 mm	15.00
2545021	24 mm	24 mm	450 mm	15.45



For more information and advice please visit [www.tinesdirect.com](http://www.tinesdirect.com)

## Hollow Tines

Part No.	Mounting Ø	Outside Ø	Total Length	Core Ø	Price £
9513123 Side Eject	9.5 mm	9.5 mm	125 mm	5 mm	6.35
9514745 Side Eject	9.5 mm	11 mm	145 mm	6 mm	7.55
1615522 Side Eject	9.5 mm	16 mm	155 mm	9.5 mm	9.60
1912807 Side Eject	19 mm	12 mm	155 mm	6 mm	8.70
1912130 Top Eject	19 mm	12.7 mm	125 mm	10 mm	2.40
1912771 Side Eject	19 mm	12.7 mm	125 mm	9 mm	4.25
1914132 Top Eject	19 mm	12.7 mm	145 mm	10 mm	2.90
1914415 Side Eject	19 mm	12.7 mm	145 mm	10 mm	4.45
1916887 Top Eject	19 mm	12.7 mm	165 mm	10 mm	3.30
1615765 Side Eject	19 mm	16 mm	155 mm	9.5 mm	11.35
1912761 Side Eject	19 mm	16 mm	125 mm	12 mm	4.25
1914136 Top Eject	19 mm	16 mm	145 mm	13 mm	2.85

*(Hollow Tines Hardened continued on next page)*

## Hollow Tines

Part No.	Mounting Ø	Outside Ø	Total Length	Core Ø	Price £
1914417 Side Eject	19 mm	16 mm	145 mm	12 mm	4.45
2015766 Side Eject	19 mm	20 mm	155 mm	13 mm	11.60
1916886 Top Eject	19 mm	16 mm	165 mm	13 mm	3.30
2514260 Side Eject	19 mm	26 mm	170 mm	16 mm	12.45
2514266 Side Eject	22.3 mm	26 mm	140 mm	16 mm	11.70



2514260



1914417

## Hollow Tines Carbide Tipped

Part No.	Mounting Ø	Outside Ø	Total Length	Core Ø	Price £
9513123H Side Eject	9.5 mm	11 mm	145 mm	5.5 mm	9.05
1912807H Side Eject	19 mm	12 mm	155 mm	6 mm	11.05
1912131H Top Eject	19 mm	12.7 mm	125 mm	9 mm	11.75
1914133H Top Eject	19 mm	12.7 mm	145 mm	9 mm	11.90
1914416H Side Eject	19 mm	16 mm	145 mm	9 mm	15.30
1615765H Side Eject	19 mm	16 mm	155 mm	9 mm	16.40
1912135H Top Eject	19 mm	16 mm	125 mm	12 mm	11.35
1914137H Top Eject	19 mm	16 mm	145 mm	12 mm	11.90
2015766H Side Eject	19 mm	20 mm	155 mm	12 mm	17.00

## Konispoon® Round Needle

Part No.	Mounting Ø	Outside Ø	Total Length	Price £
9505847K	9.5mm	5mm	140mm	6.30
9505846K	9.5mm	5mm	160mm	6.30
9506842K	9.5mm	6mm	140mm	6.30
9506845K	9.5mm	6mm	160mm	6.50



For more information and advice please visit [www.tinesdirect.com](http://www.tinesdirect.com)

## Cross Tines

Part No.	Mounting Ø	Outside Ø	Total Length	Rib Width	Price £
9510720	9.5 mm	9.5 mm	102 mm	1.5 mm	8.90
9516825	9.5 mm	9.5 mm	160 mm	1.5 mm	9.20
9514120	9.5 mm	12 mm	135 mm	2.5 mm	11.45
1916900	19 mm	12 mm	160 mm	2.5 mm	13.60
2019457	19 mm	20 mm	140 mm	3 mm	13.70
2419459	19 mm	24 mm	140 mm	5 mm	17.65
2619461	19 mm	26 mm	140 mm	5 mm	17.65
2422460	22.3 mm	24 mm	140 mm	5 mm	17.10
2622462	22.3 mm	26 mm	140 mm	5 mm	17.65

## Cross Tines Carbide Tipped

Part No.	Mounting Ø	Outside Ø	Total Length	Rib Width	Price £
9514120H	9.5 mm	12 mm	135 mm	2.5 mm	15.80
1214012H	19 mm	12 mm	145 mm	2.5mm	15.80
1274121H	12.7 mm	12 mm	140 mm	2.5 mm	15.35



For more information and advice please visit [www.tinesdirect.com](http://www.tinesdirect.com)

## Flat / Chisel Tine

Part No.	Mounting Ø	Element Width	Element Thickness	Total Length	Price £
1219841	19 mm	19 mm	6 mm	140 mm	11.25
1219842	19 mm	19 mm	6 mm	160 mm	13.90

## Solid Tines

Part No.	Mounting Ø	Outside Ø	Total Length	Price £
0105180	5 mm elbow	5 mm	180 mm	4.05
0108180	8 mm elbow	8 mm	180 mm	4.05
0614402	6 mm	6 mm	140 mm	1.70
0815052	8 mm	8 mm	150 mm	2.40
9512450	9.5 mm	9.5 mm	120 mm	1.70
9515045	9.5 mm	9.5 mm	150 mm	2.40
1906872	19 mm	6 mm	160 mm	6.80
1908873	19 mm	8 mm	160 mm	6.80
1910929	19 mm	10 mm	160 mm	6.80
1912774	19 mm	12 mm	160 mm	6.90
1916785	19 mm	16 mm	160 mm	6.90
1919799	19 mm	19 mm	160 mm	6.90
2231685	22.3 mm	16 mm	140 mm	10.20



## Hollow Tines

*(All Wiedenmann tines are Side Eject)*

*Produced from a full steel billet, shatter-proof with long durability. Standard Thread M14 or Thread M10 for GXI*

Part No.	Mounting Ø	Outside Ø	Total Length	Core Ø	Price £
W1008755	8 mm	11 mm	150 mm	6 mm	7.25
W1214770	12 mm	12 mm	160 mm	6.5 mm	8.95
W1618001	12 mm	16 mm	180 mm	9.5 mm	12.60
W1624001	12 mm	16 mm	225 mm	9.5 mm	14.20
W2018002	12 mm	20 mm	180 mm	12 mm	15.70
W2024002	12 mm	20 mm	225 mm	12 mm	19.20
W2031004	12 mm	20 mm	295 mm	12 mm	22.40
W2031461	Thread M14	20 mm	295 mm	12 mm	23.80
W2522819	Thread M14	26 mm	250 mm	16 mm	24.65
W2536042	Thread M14	26 mm	360 mm	16 mm	36.30
W3025822	Thread M14	30 mm	250 mm	21 mm	29.40
W3030385	Thread M14	30 mm	360 mm	21 mm	39.75
W3530386	Thread M14	35 mm	360 mm	27 mm	41.40
W2031901	Thread M10	20 mm	295 mm	12 mm	22.60

## Hollow Tines Carbide Tipped

Part No.	Mounting Ø	Outside Ø	Total Length	Core Ø	Price £
W1618001H	12 mm	16 mm	180 mm	9 mm	29.40
W1624001H	12 mm	16 mm	225 mm	9 mm	30.60
W2018002H	12 mm	20 mm	180 mm	12 mm	31.25
W2024002H	12 mm	20 mm	225 mm	12 mm	34.95
W2031004H	12 mm	20 mm	295 mm	12 mm	38.45
W2031461H	Thread M14	20 mm	295 mm	12 mm	36.85
W2524068H	Thread M14	26 mm	310 mm	18 mm	46.55

## Terra Rake Replacement Tine

Part No.	Mounting Ø	Outside Ø	Total Length	Core Ø	Price £
W1196554	4.6 mm	41 mm	260 mm	65 mm	5.75



## Cross Tines

Part No.	Mounting Ø	Outside Ø	Total Length	Rib Width	Price £
W0820719	8 mm	8 mm	200 mm	1.5 mm	8.55
W1916900	12 mm	12 mm	145 mm	2.5 mm	13.60
W1220244	12 mm	12 mm	200 mm	2.5 mm	13.10
W1225813	12 mm	12 mm	250 mm	2.5 mm	16.20
W1218452	12 mm	18 mm	200 mm	3 mm	15.80
W1832453	Thread M14	18 mm	320 mm	3 mm	24.85
W2235413	Thread M14	22 mm	320 mm	5 mm	30.05
W2532454	Thread M14	24 mm	320 mm	5 mm	28.45

## Cross Tines Carbide Tipped

Part No.	Mounting Ø	Outside Ø	Total Length	Rib Width	Price £
W1220244H	12 mm	12 mm	200 mm	2.5 mm	16.35

## Flat / Chisel Tine

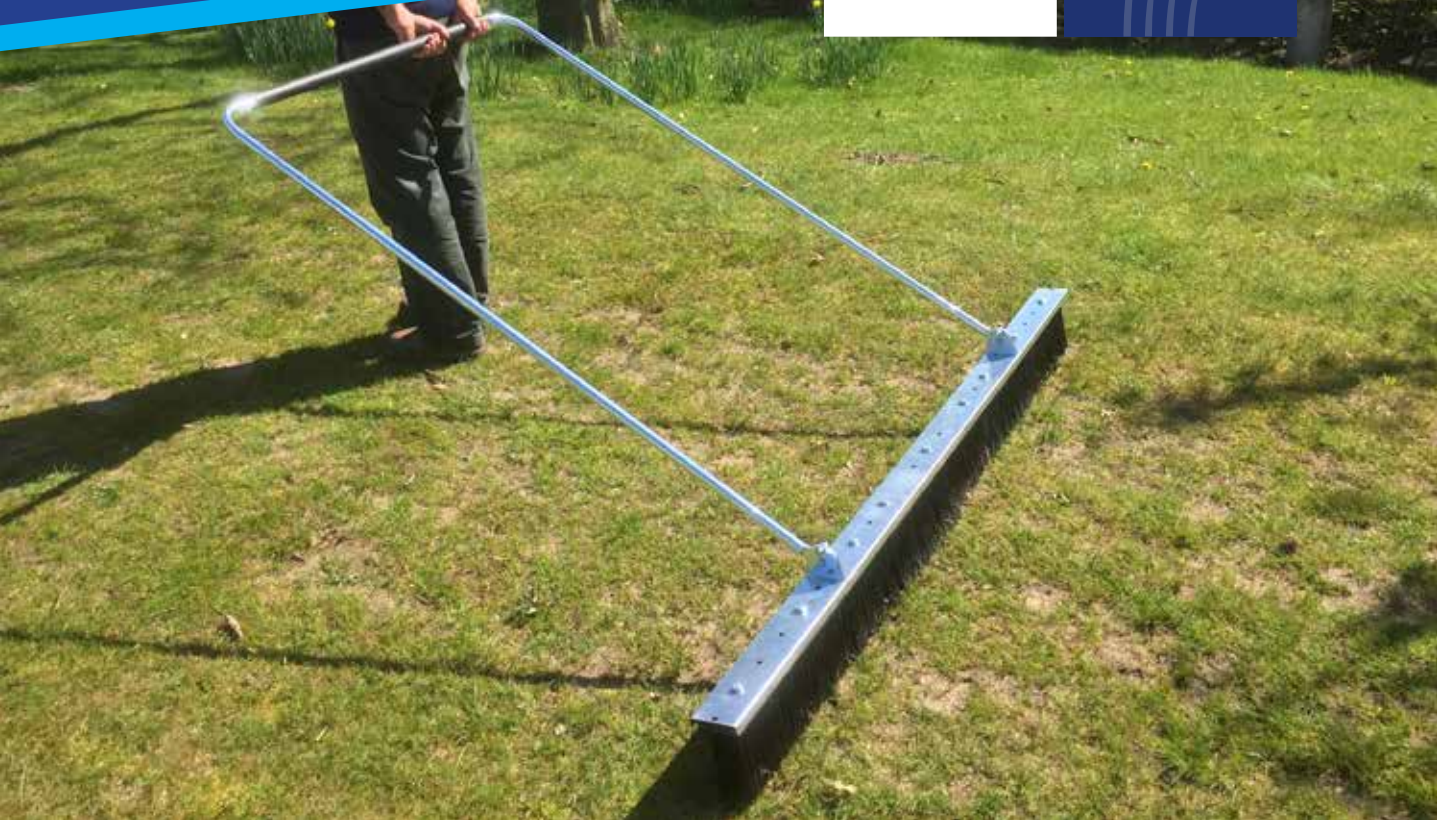
Part No.	Mounting Ø	Outside Ø	Total Length	Rib Width	Price £
W1219844	12 mm	19 mm	220 mm	6 mm	15.30

## Solid Tines - Standard Thread M14 or M10 for GXI

Part No.	Mounting Ø	Outside Ø	Total Length	Price £
W0817511	8 mm	8 mm	175 mm	2.20
W0820049	8 mm	8 mm	200 mm	2.20
W0825064	8 mm	8 mm	250 mm	2.50
W0830716	8 mm	8 mm	300 mm	2.65
W1208844	12 mm	8 mm	200 mm	4.45
W1201044	12 mm	10 mm	200 mm	4.45
W1208848	12 mm	8 mm	300 mm	5.35
W1210747	12 mm	10 mm	300 mm	5.55
W1220055	12 mm	12 mm	200 mm	2.45
W1225056	12 mm	12 mm	250 mm	2.60
W1230012	12 mm	12 mm	300 mm	3.25
W1236013	12 mm	12 mm	360 mm	3.40
W1612760	12 mm	16 mm	200 mm	7.25
W1612837	12 mm	16 mm	250 mm	8.35
W1820823	12 mm	18 mm	200 mm	8.55
W1825836	12 mm	18 mm	250 mm	9.15

## Solid Tines - Standard Thread M14 or M10 for GXI

Part No.	Mounting Ø	Outside Ø	Total Length	Price £
W1830770	Thread M14	18 mm	300 mm	11.70
W1827103	Thread M14	18 mm	350 mm	12.15
W2025727	Thread M14	20 mm	300 mm	11.70
W2035716	Thread M14	20 mm	350 mm	12.80
W2042717	Thread M14	20 mm	420 mm	13.65
W2225821	Thread M14	22 mm	300 mm	11.80
W2235126	Thread M14	22 mm	350 mm	15.20
W2242407	Thread M14	22 mm	420 mm	16.15
W2525820	Thread M14	24 mm	300 mm	13.20
W2535018	Thread M14	24 mm	350 mm	14.15
W2440751	Thread M14	24 mm	420 mm	18.30
W1830840	Thread M10	18 mm	300 mm	10.50
W2030876	Thread M10	20 mm	300 mm	10.55
W2230889	Thread M10	22 mm	300 mm	11.80



CAMPEY™

# Hand Drag Brush

Heavy-duty hand drag brush for brushing in topdressing, removal of dew and for brushing and levelling hard porous areas, as well as for use on sand filled synthetic surfaces.

Part No.	Dimensions	Description	Price £
RDB180	1.8m (6ft)	Pedestrian Drag Brush	500
RDB240	2.4m (8ft)	Pedestrian Drag Brush	525

## Brushes - Replacement Brush Sections

### Toro Front mounted greens brushes

*Also suitable for other greens mowers*



Part No.	Dimensions	Description	Price £
TDGB51	51 cm	Replacement brush only	50.00
TDGB54	54 cm	Replacement brush only	50.00
TDGB66	66 cm	Replacement brush only	60.00

### Wessex - SC12 4ft Sweeper Collector

Part No.	Dimensions	Description	Price £
TD2870	60cm x 190 mm	Brush section, white/black	33.50
TD7570	60cm x 190 mm	Brush section, yellow firm	33.50

### Tomlin - RC120/RC180 Sweeper Collector (4 Required for a set)

Part No.	Dimensions	Description	Price £
TDRC120R	600 mm x 190 mm	RC120 Section (BLACK) REGULAR	97.40
TDRC120F	600 mm x 190 mm	RC120 Section (YELLOW) FIRM	97.40
TDRC180R	1800 mm x 190mm	RC180 Section (BLACK) REGULAR	132.81
TDRC180F	1800 mm x 190 mm	RC180 Section (YELLOW) FIRM	132.81

# Brushes

**Sisis** - Auto / Trio Rotorrake, Litamisa, Litamina, Quadraplay

Part No.	Dimensions	Description	Price £
TD1520	2ft X 135mm	Quadraplay, 2ft Brush section	30.00
TD1520 H	2ft X 135mm	Quadraplay, 2ft Brush section. Heavy Duty Yellow	35.00
TD35377	18.5" x 80mm	Auto/Trio rotorake Mk4, Helical Brush	157.20
TD33872	-	Auto Rotorake Mk5, Helical Brush	169.20
TDF35919	18.5" x 80mm	Auto Rotorake Mk4 synthetic Surface	192.00
TD35377C	18.5" x 80mm	ARR Mk4 - Complete Brush Assy inc. Shaft & bearings	270.00
TDF36271	-	Rotorake 600 Helical Brush	240.00
TDF33872	-	Rotorake 500 Helical Brush	234.00
TD3623	35" x 190mm	Litamisa, 3ft Brush section (old style-6ft)	46.86
TD31836	3ft x 170 mm	Litamisa, Helical Brush LH (high lift 6ft)	279.00
TD31835	3ft x 170mm	Litamisa, Helical Brush RH (high lift 6ft)	279.00
TDF31023	6ft	Brush Strip Litamisa (FRONT 6ft)	142.50
TD31604	2ft x 170 mm	Litamina, Helical Brush RH (4ft)	207.00
TD31605	2ft x 170mm	Litamina, Helical Brush LH (4ft)	207.00
TDDF31038	4ft	Brush Strip Litamina (FRONT 4ft)	120.00
TD36698	750 x 170m	Litamina, 1500 LH Helical Brush	255.00
TD36699	750 x 170m	Litamina, 1500 RH Helical Brush	255.00
TDF36729	1500	Brush Strip Litamina 1500 (FRONT)	135.00
TDF31394	996mm	Top Spread Rotary Brush	360.00
TDD6744	1280mm	Powaspread Rotary Brush	360.00
TDF32970	840mm	Auto Spread Rotary Brush	360.00
TDF31346	6ft	Drag Brush Manual Type Medium	90.40
TDF31347	6ft	Drag Brush Manual Type Stiff	90.40



# Accessories & Equipment



## Back-Lapping Paste

Part. No.	Grade	Weight	Price £
TD2500EC	30/60 - Extra Course	2.5Kg	28.50
TD5000EC	30/60 - Extra Course	5Kg	45.00
TD0.5C	80 - Course	0.5Kg	15.00
TD2500C	80 - Course	2.5Kg	28.50
TD5000C	80 - Course	5Kg	45.00
TD0.5M	120 - Medium	0.5Kg	15.00
TD2500M	120 - Medium	2.5Kg	28.50
TD5000M	120 - Medium	5Kg	45.00
TD2500F	220 - Fine	2.5Kg	28.50
TD5000F	220 - Fine	5Kg	45.00

*The length measurements refer to the total length of the tools. Our general Terms and Conditions apply. Prices plus VAT, freight and additional costs. Allowing for price and technical changes.*



# Digital Gauges

---

Tines Direct are pleased to offer our bespoke specification as follows:

- 18" Bar length - Most popular size to suit Greens, Tees and Outfield cutting units
- Digital - For Ease of Reading & Setting
- Metric Nomination - For UK & Europe
- Aluminium Carry Case - Protection for your Gauge, with Die Cut Foam For Perfect Fit



## Digital Accu Gauge

---

Standard

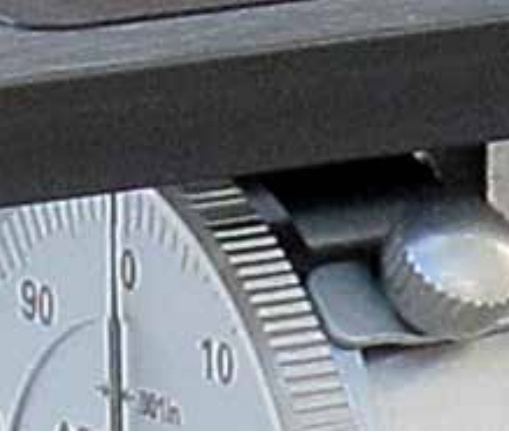
**£215.30**<sup>+vat</sup>

Hands free

**£235**<sup>+vat</sup>

Hands free with 24" bar

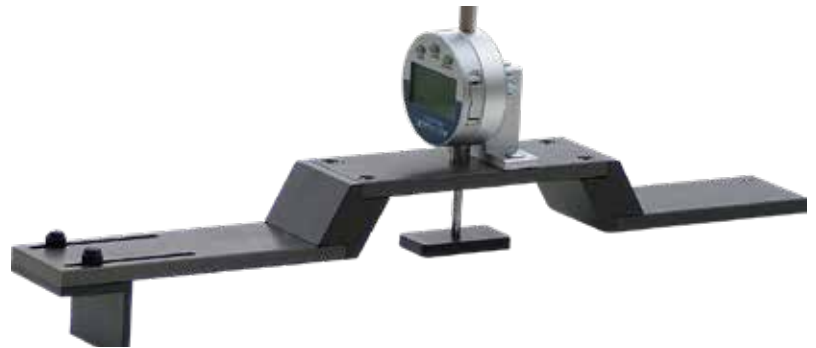
**£265**<sup>+vat</sup>



## Verticut-Gage™

£280<sup>+vat</sup>

The VERTICUT-GAGE is a precision measuring instrument for accurately setting the desired depth on verticutter units.



## Groomer-Gage®

£190<sup>+vat</sup>

GROOMER-GAGE is a precision measuring instrument for accurately setting the desired grooming depth of groomer or verticutting units.



## Bedknife Buddy™

£26<sup>+vat</sup>

A quick and easy way to lightly “touch up” greensmower bedknives



# Accessories & Equipment

## Top Link Assemblies



*\*\*Large selection of linkage pins and accessories available from stock\*\**

Part. No.	Category	Description	Price £
GR20099060	1 & 1	Top Link Assy. Min.L.620mm, Max.L.755mm	30.99
GR20099077	1 & 1	Top Link Assy. Min.L.610mm, Max.L.825mm	60.95
GR20099078	1 & 2	Top Link Assy. Min.L.620mm, Max.L.830mm	71.60
GR20099068	1 & 1	Top Link Assy. Min.L.485mm, Max.L.685mm	44.10
GR20010104	1 & 1	Hyd Top Link. Min.L.460mm, Max.L.670mm supplied complete with Hose Kit & ½" Male Couplings	322.49
GR2000072	2 & 2	Hyd Top Link. Min.L.600mm, Max.L.880mm supplied complete with Hose Kit & ½" Male Couplings	471.23



## PTO Shafts Complete

*\*\* Other PTO Shafts are available to order, please ask for further details.*

Part. No.	PTO Series	HP @ PTO	Description	Price £
TDPTO1000	2	20	Series 2 PTO Shaft, Overall length 860 mm	151.38
TDPTO1003	4	31	Series 4 PTO Shaft, Overall length 860 mm	172.68
TDPTO1005	5	63	Series 5 PTO Shaft, Overall length 860 mm	225.21

## PTO Safety Guard

*\*\* Other PTO Guards are available to order, please ask for further details.*

### PTO Safety Cover

TDPTO1500	PTO Guard to suit TDPTO1000, includes guard retainer TDPTO 1603	52.44
TDPTO1502	PTO Guard to suit TDPTO1003, includes guard retainer TDPTO 1604	67.12
TDPTO1504	PTO Guard to suit TDPTO1005, includes guard retainer TDPTO 1606	81.90

# Accessories & Equipment

## Replacement Seats

All seats have a weather proof finish with a superior filling for comfort. They are backed with a hard black plastic skeleton for longevity, with an integral hole for operators Presence Device and multiple mounting holes as illustrated.

**KAB P2 SEAT** £90.00

Colour option

E.g. Small Triple Cylinder Mower or  
Small Rotary Ride on Mower

---

**XB180 MEDIUM BACK SEAT** £130.00

Colour option

E.g. Workman or Gator

---

**XB200 HIGH BACK SEAT** £148.00

Colour option

E.g. Jacobsen, Toro or John Deere

---

**XBSWITCH OPERATOR** £30.00

Presence Switch for XB Seats

---



# Accessories & Equipment

# Tas Trimmer



The TAS Trimmer blade mounts on any straight shaft trimmer. Once installed, the TAS Trimmer is ready to trim grass away from sprinkler heads, valve boxes, yardage markers and tee markers in a flash. The amount of time and energy saved is so great that it's nearly immeasurable. The TAS Trimmer is the #1 choice of landscape & golf course irrigation professionals.

## Fitment

The TAS Trimmer fits any straight shaft trimmer on the market and mounts like a brush cutter attachment. Simply remove the original trimmer head and attach the TAS Trimmer using the brush cutter adapter kit for your make and model.

*\*ECHO brand trimmers will need the 20mm bushing - supplied with your TAS Trimmer.*

*\*Bent shaft trimmers are NOT approved for use with the TAS Trimmer*

Part. No.	Size	£/Piece
TAS375	3.90" inch	36.00
TAS45	4.5" inch	36.00
TAS55	5.5" inch	36.00
TAS7	7" inch	34.00
TAS75	7.5" inch	34.00
TAS775	7.75" inch	34.00
TAS8	8" inch	40.00
TAS85	8.5" inch	40.00
TAS10	10" inch	40.00

*Compatible with all irrigation systems including Rainbird, Hunter, Toro, Buckner, Bear, R.L. Nelson, K-Rain, Legacy, John Deere and Weathermatic.*



## Airrex AH-300i Infrared Bio Heater

**£2400**

Discover the redesigned Airrex AH-300i Infrared Heater with mobile control, compact, efficient, and perfect for terraces, garages, leisure spaces, and greenhouses. Enjoy odor-free heating with no exhaust pipe, rapid warmth for spaces up to 1500 m<sup>3</sup>, and energy-saving performance. Completely mobile and installation-free, it operates quietly at just 48 dB with adjustable temperatures (0–40°C). Backed by a 3-year warranty, easy maintenance, the Airrex AH-300i combines low consumption, silent operation, and a fan-free design for dust-free air. Reliable, efficient heating made simple.

<b>Heating Capacity</b>	15 Kw/H = 51180 Btu/H
<b>Weight / Dimensions</b>	40 Kg / 95 X 30,5 X 101 Cm (W X D X H)
<b>Suitable Fuels</b>	Biodiesel, Renewable Diesel, Diesel Or Red Diesel
<b>Fuel Consumption</b>	0,95 – 1,14 L/H (Continuous Heating)
<b>Fuel Tank Volume</b>	45 L
<b>Power Consumption</b>	80 W (230 V, 50 Hz)
<b>Noise Level</b>	48db
<b>Thermostat Control</b>	Yes, Automatic
<b>Temperature Adjustment Range</b>	0-40°C
<b>Mobile Applications</b>	Android / IOS





CAMPEY™

## Seed Shot™

Perfect for targeted seeding post-game, depositing a precise quantity of seed into the soil for optimal germination rates.

- Makes a hole for the seed to go into
- For Rye grass or similar size seed
- Approx 22mm radial distance apart
- 19 x holes
- 7mm diameter
- Up to 20mm deep
- Weighs 3.5KG

£750<sup>+vat</sup>





# IMANTS Penetrometer

## Hand operated professional compaction meter

The Imants penetrometer is a hand held, professional compaction meter to locate and monitor the compaction levels in the soil / root-zone. Understanding the degree of compaction enables the right procedures to be taken to eliminate excessive levels. Lack of air in compacted soil is a major problem, as the roots need access to oxygen to survive. As a rule of thumb, compaction greater than 20 bar pressure (285 psi) will cause problems and action should be taken to relieve the compaction in the rootzone.

Part. No.	Description	£/Piece
IM005038	Hand Operated Professional compaction meter	302.00

# Dennis

## Back Lapping Kits



### Dennis FT510 Back Lapping Kit

Dennis FT Range Cylinder Back Lapping Kit, includes;  
1/2" Speed Brace, Cassette Drive Adaptor  
2.5kg tub of medium  
80 grit back lapping paste

was ~~£415~~ **£195**<sup>+vat</sup>



### Dennis G Series Back Lapping Kit

Dennis FT Range Cylinder Back Lapping Kit, includes;  
1/2" Speed Brace, Cassette Drive Adaptor  
2.5kg tub of medium  
80 grit back lapping paste

was ~~£370~~ **£195**<sup>+vat</sup>

**Notes**

---

---

---

---

---

---

---

---

---

---

---

---

---

---

---

---

---

---

---

---

---

---

---

---

---

---

---

---

---

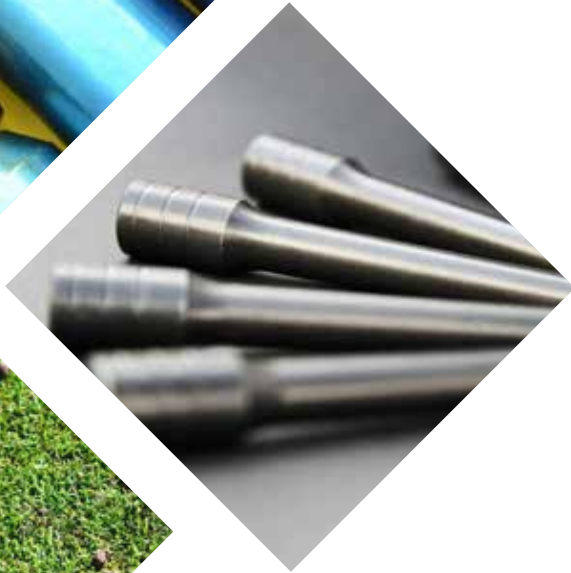


For more information and advice please visit [www.tinesdirect.com](http://www.tinesdirect.com)



Tines Direct is a division of  
**Richard Campey Ltd**

Marton, Macclesfield, Cheshire  
SK11 9HG United Kingdom



Replacement Tines for Verti-Drain (compatible with), Weidenmann Terraspikes, Ryan, Toro, John Deere & Groundsman Corers and many more! Thatchaway, Graden & Sisis Scarifiers. Replacement brushes for Sisis, Tomlin & Wessex Sweepers. Specialists in Carbide Tipped Tines. \*Free delivery on online orders over £120.